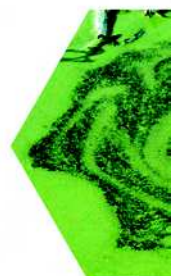
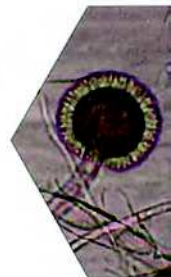


# Product CATALOG



**ENVIROLOGIX™**  
*Putting Science to the Test*



# TEST KIT FORMATS

All of our diagnostic test kits are based on platforms that allow for rapid, sensitive and economic screening of large numbers of samples in markets previously constrained by high cost and slow turn-around time. All test kits are manufactured on-site.

## Qualitative Test Strips

*QuickStix™ • QuickTox™  
QuickComb™ • ComboComb™*

These rapid field tests designed for qualitative analysis are dipped directly into the sample extract and the results – easily seen as bright, clear lines – are determined in 2-5 minutes.



## Quantitative and Qualitative Plates

*QuantiPlate™ • QualiPlate™*

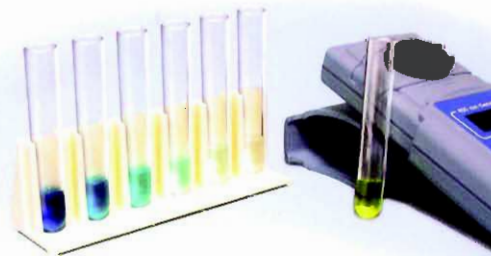
Enzyme-Linked ImmunoSorbent Assay (ELISA) plate kits are ideal for low-cost, high-volume, quantitative requirements. ELISA tests are highly sensitive, and allow many samples to be run simultaneously. Each kit includes the required reagents and standards, and the typical run time is 60-120 minutes.



## Qualitative or Quantitative Coated Tubes

*QualiTube™ • QuantiTube™*

ELISA tube kits for water and soil are ideal when rapid qualitative, semi-quantitative or quantitative results are required. Tests can be read visually or in a reader. Typical run time for a tube assay is 15-30 minutes.



## Readers

EnviroLogix also provides diagnostic readers for strip and plate tests, allowing users to read, quantify, store, print, transmit and analyze data.



## Food & Feed Safety Kits - QuickTox



*Kits contain 50 strips packaged in moisture-resistant canisters, with pipettes and reaction vials.*

Toxin or Contaminant	Catalog No.	Application
Fumonisin – <b><i>Quantitative</i></b>	AQ 111 BG	Corn – bulk grain (quantitative with QuickScan)
DON (deoxynivalenol, vomitoxin) – <b><i>Quantitative</i></b>	AQ 204 BG	Corn & Wheat – bulk grain (quantitative with QuickScan)
DON (deoxynivalenol, vomitoxin) – 2 ppm, 1 ppm or 0.5 ppm	AS 204 BG	Corn, Wheat & Barley – bulk grain
Aflatoxin – <b><i>Quantitative</i></b>	AQ 109 BG	Corn – bulk grain (quantitative with QuickScan)
Aflatoxin – 20 ppb Screen	AS 101 BG	Corn – bulk grain
Melamine – 2.5 ppm	AS 073 BG	Feed inputs – ground corn, corn fractions, cottonseed meal, DDGs, soybean meal, and more

*Catalog Numbers beginning with AQ are optimized for use on the QuickScan System for quantitative results. See "Accessories - Readers" for information on QuickScan*



## GMO Kits - QuickStix

*QuickStix Kits contain 100 strips, packaged 50 each in moisture-resistant canisters, with pipettes and reaction vials. Bulk packaging and multi-strip comb formats are available for use in rapid processing of large numbers of samples.*

<b>Protein</b>	<b>Trade Name</b>	<b>Catalog No.</b>	<b>Application</b>
<b>Corn</b>			
Cry1Ab	YieldGard®	AQ 003 BG AS 003 BG AS 003 LS	Bulk grain Leaf, seed
Cry1F	Herculex™ I	AQ 016 BG AS 016 BG AS 016 LS	Bulk grain Leaf, seed
Cry2A	<i>in</i> Genuity™ VT Triple PRO™	AQ 005 BG AS 005 BG AS 005 LS	Bulk grain Leaf, seed
mCry3A	Agrisure™ RW	AQ 037 BG AS 037 BG AS 037 LT	Bulk grain Leaf
Cry3Bb	YieldGard Rootworm	AQ 015 BG AS 015 BG AS 015 LS	Bulk grain Leaf, seed
Cry9C	StarLink®	AS 008 BG	Bulk grain
Cry34Ab1	Herculex RW	AQ 054 BG AS 054 BG AS 054 LS	Bulk grain Leaf, seed
CP4 EPSPS	Roundup Ready®	AQ 010 BG AS 010 BG AS 010 LS	Bulk grain Leaf, seed
PAT/ <i>pat</i>	LibertyLink®	AQ 014 BG AS 014 BG AS 014 LS	Bulk grain Leaf, seed
<b>QuickComb</b>	<b>QuickComb Kit, for rapid screening of bulk grain, custom assembled to hold any combination of GMO tests, utilizes our Common Extraction™ method</b>		
Up to 8 different proteins/traits		AQ 036 TCK AS 036 TCK	Bulk grain

*Catalog Numbers beginning with AQ are optimized for use on the QuickScan System for quantitative results. See "Accessories - Readers" for information on QuickScan*

Protein	Trade Name	Catalog No.	Application
<b>Soybean</b>			
PAT/ <i>pat</i>	LibertyLink®	AQ 014 BGB AS 014 BGB AS 014 LS	Bulk grain, Leaf
CP4 EPSPS	Roundup Ready	AQ 010 BGB AS 010 BGB AS 010 LS	Bulk grain, Leaf
<b>QuickComb</b>	<b>QuickComb Kit, for rapid screening of bulk grain, custom assembled to hold both soybean GMO tests, utilizes our Soybean Common Extraction™ method</b>		
PAT/ <i>pat</i> and CP4 EPSPS	LibertyLink® and Roundup Ready	AQ 076 TCK AS 076 TCK	Bulk grain



*Catalog Numbers beginning with AQ are optimized for use on the QuickScan System for quantitative results. See "Accessories - Readers" for information on QuickScan*

Protein	Trade Name	Catalog No.	Application
<b>Cotton</b>			
Cry1Ac	Bollgard®	AS 003 LS AS 003 AP	Leaf, seed Adventitious presence
Cry2A	<i>in</i> Bollgard II	AS 005 AP	Adventitious presence
CP4 EPSPS	Roundup Ready	AS 011 LS AS 011 AP	Leaf, seed Adventitious presence
PAT/ <i>bar</i>	LibertyLink	AS 013 LS AS 013 AP	Leaf, seed Adventitious presence
Cry1F	<i>in</i> WideStrike™	AS 016 AP	Adventitious presence



*more ►*

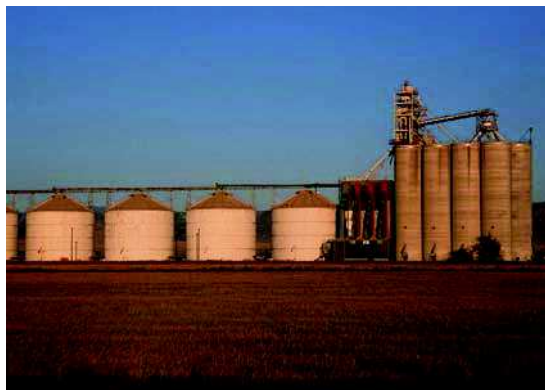
## GMO Kits - QuickStix

*QuickStix Kits contain 100 strips, packaged 50 each in moisture-resistant canisters, with pipettes and reaction vials. Bulk packaging and multi-strip comb formats are available for use in rapid processing of large numbers of samples.*

Protein	Trade Name	Catalog No.	Application
<b>Rice</b>			
PAT/ <i>bar</i>	LibertyLink	AS 013 RB	Bulk grain

Protein	Trade Name	Catalog No.	Application
<b>Canola</b>			
CP4 EPSPS	Roundup Ready	AS 017 LS AS 017 BG	Leaf, seed Bulk grain
PAT/ <i>pat</i>	LibertyLink	AS 040 LS	Leaf, seed

Protein	Trade Name	Catalog No.	Application
<b>Alfalfa</b>			
CP4 EPSPS	Roundup Ready	AS 045 BG AS 045 AH AS 045 LT	Bulk seed, hay, leaf



## GMO Kits – QuickStix Combo

*QuickStix Combo Kits (multi-analyte formats) contain 100 strips, packaged 50 each in moisture-resistant canisters, with pipettes and reaction vials. All are available in an 8-strip comb format for seed lot testing in 48-well plates.*

Protein	Trade Name	Catalog No.	Application
<b>Corn</b>			
Cry1Ab+Cry3B	YieldGard Plus	AS 038 LS	Leaf, seed
<b>Cotton</b>			
Cry1Ac+Cry2A	Bollgard II <sup>®</sup>	AS 012 LS	Leaf, seed
Cry1Ac+ CP4 EPSPS	Bollgard + Roundup Ready	AS 034 ST	Seed
Cry1Ac+Cry2A+ CP4 EPSPS	Bollgard II + Roundup Ready	AS 046 ST	Seed
Cry1Ac+Cry2A+ PAT/ <i>bar</i>	Cry1/Cry2 + LibertyLink	AS 047 ST	Seed
Cry1Ac+Cry1F+ CP4 EPSPS	WideStrike / Roundup Ready	AS 060 LS	Leaf, seed
<b>“QUADS”</b>	<b>Four traits per strip, for multiple trait testing</b>		
Cry1Ac+Cry2A+ PAT/ <i>bar</i> +CP4 EPSPS		AS 067 ST	Seed
Cry1Ac+Cry2A+ PAT/ <i>bar</i> +GlyTol		AS 069 ST	Seed

**NEW!**



## GMO Kits – QualiPlate

*Kits include a 96-well antibody coated plate along with necessary conjugates and reagents for high throughput qualitative testing. Plates marked \* are 96-well plates with twelve 8-well removable antibody-coated strips for quantitative testing.*

<b>Protein</b>	<b>Trade Name</b>	<b>Catalog No.</b>	<b>Application</b>
<b>Corn</b>			
Cry1Ab	YieldGard, MON810, Bt11	AP 003	Leaf, seed, grain
Cry1F	Herculex I	AP 016	Leaf, seed, grain
mCry3A	Agrisure™ RW	AP 050	Leaf, seed, grain
Cry3Bb	YieldGard Rootworm	AP 015	Leaf, seed, grain
Cry34	Herculex RW	AP 054	Leaf, seed, grain
Cry9C	StarLink	AP 008*	Leaf, seed, meal, grain
GT4621	Optimum® GAT®	AP 053	Leaf, seed, grain
PAT/ <i>bar</i>	LibertyLink	AP 013	Leaf, seed, grain
PAT/ <i>pat</i>	LibertyLink	AP 014	Leaf, seed, grain
CP4 EPSPS	Roundup Ready	AP 010	Leaf, seed, grain
<b>Cotton</b>			
Cry1Ac	Bollgard	AP 003	Leaf, seed
Cry1F	<i>in</i> WideStrike	AP 016	Leaf, seed
Cry2A	<i>in</i> Bollgard II	AP 005	Leaf, seed
PAT/ <i>bar</i>	LibertyLink	AP 013	Leaf, seed
PAT/ <i>pat</i>	LibertyLink	AP 014	Leaf, seed
CP4 EPSPS	Roundup Ready	AP 010	Leaf, seed

**more ►**

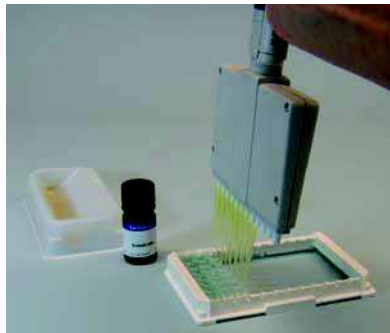


### Soybean

CP4 EPSPS	Roundup Ready	AP 032*	Soybean, soy flour
GT4601	Optimum GAT	AP 068	Soy leaf

### Other

Cry1C		AP 007*	Leaf (quantitative)
Cry1C		AP 056	Leaf (qualitative)
CryIIA1		AP 075	Potato leaf & tuber tissue



## GMO Kits – QualiPlate Combo

*Multi-analyte QualiPlate Combo Kits detect two different proteins with one test*

### Corn

Cry1 / Cry3	YieldGard Plus	AP 039	Leaf, seed
Cry1F/Cry34	HERCULEX XTRA	AP 077	Leaf, seed

### Cotton

Cry1 / Cry2	Bollgard II	AP 051	Leaf, seed
-------------	-------------	--------	------------

*More multi-analyte tests for cotton and corn are being added—  
call our Sales Team at 1-866-408-4597 for the latest developments.*

## Mold & Mold Toxin Kits – QuickTox / QuantiTox



*QuickTox kits contain 2, 20 or 50 strips and all disposables. QuantiTox kits contain a 96-well plate with eight 12-well removable antibody coated strips, enzyme conjugate, calibrators and reagents.*

<b>Mold or Toxin</b>	<b>Catalog No.</b>
QuickTox Kit for <i>Stachybotrys chartarum</i> and <i>Aspergillus niger</i>	ES 103 PRO 20 ES 103 PRO 50
QuickTox Black Mold Test Kit	ES 103 HOT
QuantiTox Kit for Trichothecenes (Satratoxin G & H, Roridin A, E, H and L-2, Verrucarol A & J, Isosratoxin F, and Verrucarol)	EP 100
QuickTox Kit for <i>Aspergillus</i> and <i>Penicillium</i>	ES 110 PRO 20

## Pesticide Residue Kits – QuantiPlate



*Each pesticide kit contains a 96-well antibody coated plate, calibrators and reagents.*

<b>Pesticide</b>	<b>Catalog No.</b>
Imidacloprid	EP 006
Isoproturon	EP 019
Paraquat	EP 023

## Algal Toxin Kits – QuantiPlate / QuantiTube / QualiTube



*Each kit contains an antibody-coated 96-well plate or set of tubes, calibrators and reagents.*

<b>Blue-Green Algal Toxin Kits</b>	<b>Catalog No.</b>
QuantiPlate Kit for Microcystins	EP 022
QualiTube Kit for Microcystins	ET 022
QuantiTube Kit for Microcystins	ET 039

## Plant Pathogen Kits – QuickStix / QuickBead / QualiPlate



Each QualiPlate Kit includes a 96-well antibody coated plate along with all necessary reagents. Most are twelve 8-well removable antibody-coated strip plates. Plates marked \* are solid plates. QuickStix kits contain 50, 25 or 5 strips, packaged in moisture-resistant canisters, with buffer, pipettes and reaction vials. QuickBead kits contain immunomagnetic beads (IMBs) that allow sensitive and specific capture of its target protein from extracts, expediting clean downstream analysis.

Pathogen	Format	Catalog No.	Application
Bacterial Fruit Blotch	QuickStix	AS 048	Watermelon and other cucurbits – leaf, seed and bacterial colonies
	QuickBead	AB 048	
Botrytis in Grape Wine Juice	QuickStix	AS 049 GP	Grape juice extract
Botrytis in Ornamentals	QuickStix	AS 049 OR	Cut flowers: petals or leaves
Lettuce Mosaic Virus (LMV)	QualiPlate	AP 059*	Lettuce – seed, leaf, seedling
Soybean Rust	QualiPlate	AP 107	Soybean – leaf
	QuickStix	AS 107	Soybean – leaf
Squash Mosaic Virus (SqMV)	QualiPlate	AP 062	Squash and other cucurbits – seed or leaf tissue
Tomato Apex Necrosis Virus (ToANV) [Tomato Marchitez Virus - ToMarV]	QuickStix	AS 064 PT	Tomato – leaf, fruit
Tomato Spotted Wilt Virus (TSWV)	QualiPlate	AP 063	Tomato – leaf, fruit
	QuickStix	AS 063 PT	Tomato – leaf, fruit



## Accessories

Description	Catalog No.
Tissue Extraction Kit (100 disposable extraction tube & pestle sets, with punch cap)	ACC 002
Tissue Extraction Kit, pestles only, case of 100	ACC 002 Pes
Tube Rack (90 Tube "grip-rack")	ACC 003
Waring blender: sample prep for corn and soybeans	ACC 008
Blender base adapter: sample prep	ACC 009
Oster blender: sample prep for canola or soybeans	ACC 043
Replacement blades for Oster blender	ACC 044
8 oz. jar pack (10, with caps) for Oster Blender (canola prep)	ACC 045
Coffee grinder: sample prep for rice and alfalfa seed	ACC 040
Extraction cups, 148 mL with cap, 50 cups per pack	ACC 012 50
Extraction cups, 148 mL with cap, 500 / case	ACC 012 CS
Seed Crusher, 48-well	ACC 015
Plates, 48-well, 1.6 mL, 100/cs	ACC 016 100
Reaction vials, 0.5 mL, 100/bag	ACC 019
Disposable Pipettes, 1.5 mL, 100/bag	ACC 020
Multi-Wall Mesh Pouch, 100/bag	ACC 021-100
Multi-Wall Mesh Pouch, 1200/cs	ACC 021
Graduated Cylinder, 50 mL, HDPE	ACC 023

## Accessories – Solvents and Buffers

Description	Catalog No.
Ethanol, 50%, 4 L bottle, one per case	ACC-E26902-1X4
Ethanol, 50%, 4 L bottles, three per case	ACC-E26902-3X4
Methanol, 70%, 4 L bottle, one per case	ACC-E26904-1X4
<i>Other sizes and configurations available</i>	
10X Concentrated Leaf & Seed Extraction Buffer (with PVP, for Plant Pathogen QualiPlate Kits)	KR 160
35X Concentrated Leaf & Seed Extraction Buffer (without PVP, for Plant Pathogen QualiPlate Kits)	KR 186

*more* ►

## Accessories - Readers

Description	Catalog No.
<b>QuickScan</b> Complete System (reader & computer)	ACC 131
Optional Thermal Receipt Printer for QuickScan	ACC 135



*QuickScan is one of the most flexible and precise test strip reading systems available. Using a standard PC platform, the QuickScan System provides objective, fast and quantifiable results for EnviroLogix test kits.*

QuickStix Reader (for Botrytis)

ACC 031

*QuickStix Reader quantifies the amount of Botrytis in a sample by reading a QuickStix Botrytis Strip - this novel testing system helps vineyards, laboratories and winemakers make better decisions on harvesting, segregation and fermentation*



StatFax 303 Strip Reader

ACC 005

Mini-Photometer Model 6



ACC 006

## Isotyping Kits – IsoQuick

**NEW!**



*IsoQuick Kits contain 5 or 25 strips packaged in moisture-resistant canisters.*

EnviroLogix IsoQuick Kits for Mouse Monoclonal Isotyping are accurate, fast, and easy-to-use, and give you flexibility for classifying Monoclonal Antibodies (MAbs).

<b>Isotype/Heavy chain/Light chain</b>	<b>Catalog No.</b>
IsoQuick Isotyping Kit: 1 canister of each Strip (IgG, IgA/M, and K/L)	RS 200
IgG Strips: IgG1, IgG2a, IgG2b, IgG3	WRS 201
IgA/M Strips: IgA or IgM	WRS 202
K/L Strips: kappa or lambda	WRS 203

**Speed:** IsoQuick requires no preparation; results develop in five (5) minutes or less.

**Accuracy:** IsoQuick uses Monoclonal Antibodies for both detection and capture. The result is a diagnostic tool that is specific for each isotype.

**Convenient:** IsoQuick is packaged in canisters of 5 or 25 strips, which can be purchased separately. Prepackaged kits in two sizes provide complete sets of test strips. The interpretation pad provided makes it easy to document results.

**Easy-to-Use:** IsoQuick can be used directly in Cell Supernatant with no dilution. If testing Ascites or Purified Antibody, a simple dilution step is recommended. The strips are used directly from the canister with no other components to add, mix or prepare that may affect results.

**Flexible:** IsoQuick is the most flexible and cost-effective tool for quickly classifying the isotype of mouse monoclonal antibodies. Separated over three strips, IsoQuick allows you to purchase and test for only those isotypes that are important to you to test for at different stages of the MAb development/production cycle.



*Roundup Ready, Genuity, VT Triple PRO, Bollgard and YieldGard are trademarks and registered trademarks of Monsanto Technology LLC*

*Optimum and GAT are registered trademarks of Pioneer Hi-Bred International Inc.*

*LibertyLink is a registered trademark of Bayer*

*Herculex and WideStrike are trademarks of Dow AgroSciences LLC*

*Agrisure is a registered trademark of Syngenta Group Co.*

*StarLink is a registered trademark of Aventis CropScience*

*EnviroLogix, the EnviroLogix logo, QuickComb, QuickStix,*

*QuickTox, IsoQuick, QualiPlate, QuantiPlate, and*

*Common Extraction are trademarks of EnviroLogix Inc.*

**Trade names are given strictly for convenience. Use of trade names does not imply endorsement.**

Rev. 03-31-10

## Technical Support and Ordering INFORMATION

Place orders with us directly by phone,  
fax or email. Visit our Web site  
at **www.envirologix.com**  
to obtain detailed product information.



Technical and customer support  
staff are available during the  
hours shown below.



*Toll-free number: 1-866-408-4597*

*Fax: 207-797-7533*

*Representatives available M-F, 8 a.m.–5 p.m. EST.*

*Email: **info@envirologix.com***

*Staffed M-F, 8 a.m.–5 p.m. EST.*

*Representatives will respond to your requests within 24 hours.*

**ENVIR**  **LOGIX**<sup>TM</sup>  
*Putting Science to the Test*